



STK32C Polyclonal Antibody

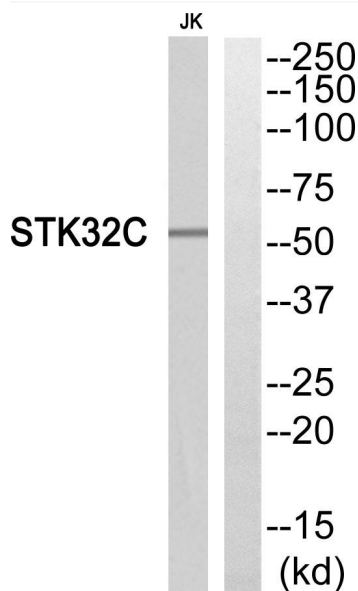
Catalog No	YP-Ab-15004
Isotype	IgG
Reactivity	Human;Mouse
Applications	WB;IHC;IF;ELISA
Gene Name	STK32C
Protein Name	Serine/threonine-protein kinase 32C
Immunogen	The antiserum was produced against synthesized peptide derived from human STK32C. AA range:340-389
Specificity	STK32C Polyclonal Antibody detects endogenous levels of STK32C protein.
Formulation	Liquid in PBS containing 50% glycerol, 0.5% BSA and 0.02% sodium azide.
Source	Polyclonal, Rabbit,IgG
Purification	The antibody was affinity-purified from rabbit antiserum by affinity-chromatography using epitope-specific immunogen.
Dilution	WB: 1/500 - 1/2000. IHC: 1/100 - 1/300. ELISA: 1/5000.. IF 1:50-200
Concentration	1 mg/ml
Purity	≥90%
Storage Stability	-20°C/1 year
Synonyms	STK32C; Serine/threonine-protein kinase 32C; PKE; YANK3
Observed Band	
Cell Pathway	intracellular,
Tissue Specificity	Testis,
Function	catalytic activity:ATP + a protein = ADP + a phosphoprotein.,cofactor:Magnesium.,similarity:Belongs to the protein kinase superfamily. Ser/Thr protein kinase family.,similarity:Contains 1 protein kinase domain.,
Background	The protein encoded by this gene is a member of the serine/threonine protein kinase family. It is thought that this family member is functional in brain due to its high expression levels there. DNA methylation differences have been found in this gene in monozygotic twins that are discordant for adolescent depression. Alternative splicing results in multiple transcript variants. [provided by RefSeq, Jan 2016],
matters needing attention	Avoid repeated freezing and thawing!



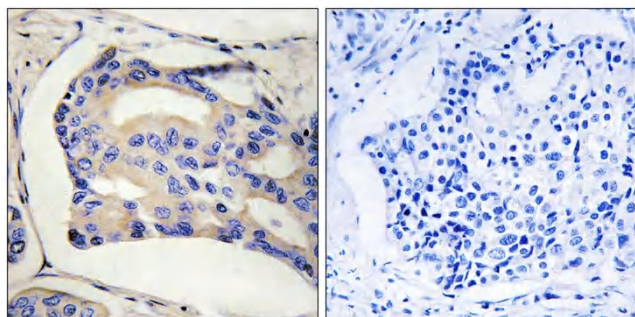
Usage suggestions

This product can be used in immunological reaction related experiments. For more information, please consult technical personnel.

Products Images



Western blot analysis of STK32C Antibody. The lane on the right is blocked with the STK32C peptide.



Immunohistochemistry analysis of paraffin-embedded human breast cancer, using STK32C Antibody. The picture on the right is blocked with the STK32C peptide.